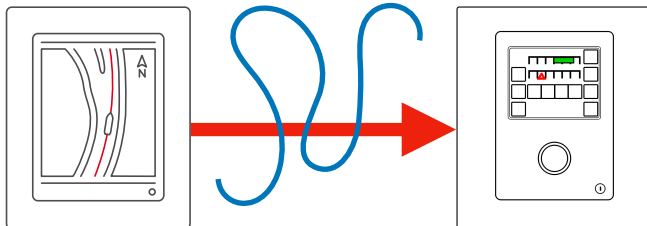


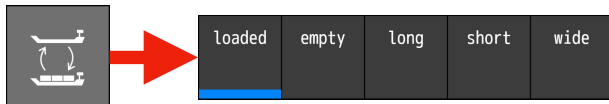
AlphaRiverTrackPilot – quick start guide

Preparation

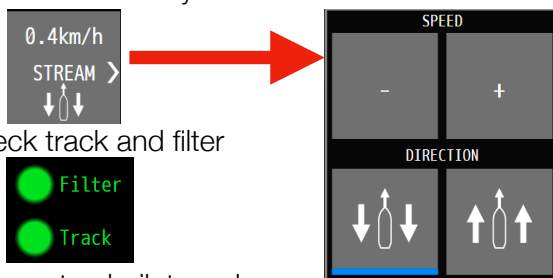
1. Choose track from ECDIS or in TrackPilot



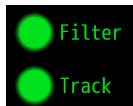
2. Choose profile



3. Set stream velocity and direction



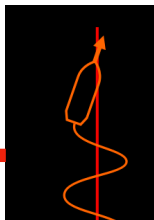
4. Check track and filter



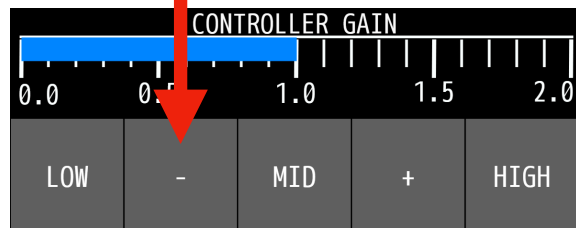
5. Turn on trackpilot mode

Oscillations ! Check stream settings

Oscillations around guiding line



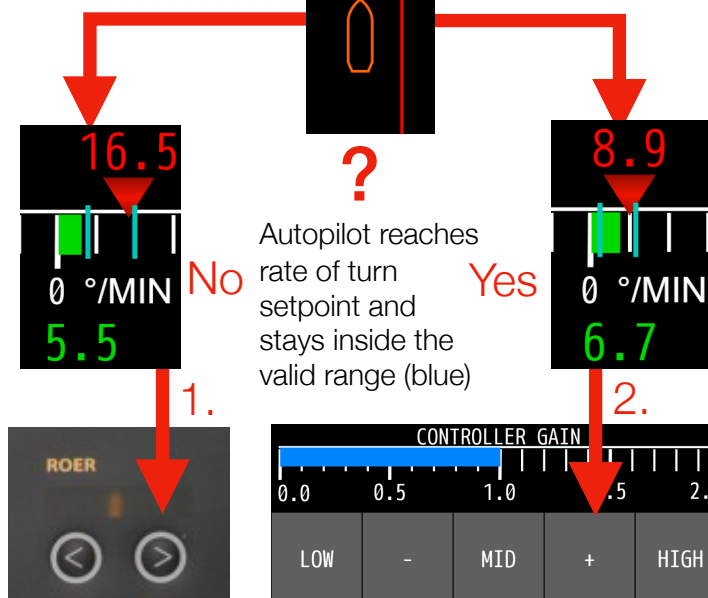
Lower „Controller Gain“



Test for a few minutes and adjust further if necessary

Permanent track deviation ! Check stream settings

Permanent track deviation

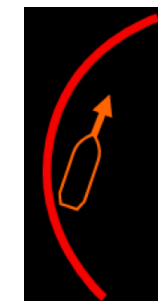


1. Increase „Rudder“ on autopilot
2. Increase „Controller Gain“ on TrackPilot
3. Check rate of turn signal

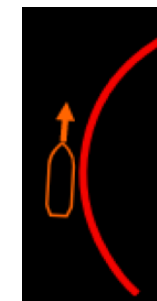
Deviation in curves

! Check stream settings

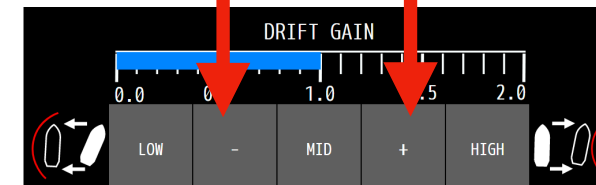
Too far on inside of curve



Too far on outside of curve



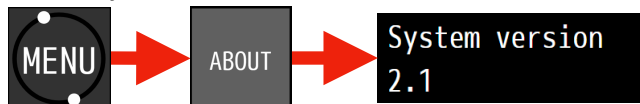
Adjust drift gain



Test for a few minutes and adjust further if necessary

Miscellaneous

Check system version

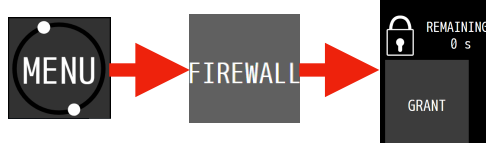


Restart TrackPilot

Open fuse F4 in control cabinet.
Close again after 3sec

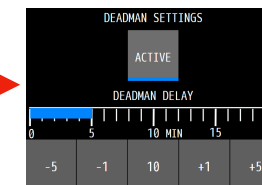


Deactivate firewall



Setup deadman monitoring

3x



Download manual



ALPHATRON
Marine

powered by
argonics

AlphaRiverTrackPilot – warnings and alarms

Warning Name	Action	Alarm Name	Action
Close to end of track	<ul style="list-style-type: none">• Switch to manual steering• Choose new guiding line	Track too far away	<ul style="list-style-type: none">• Switch to manual steering• Check if the correct guiding line has been chosen• Choose another line closer to the current position
Position inaccurate	<ul style="list-style-type: none">• Wait for the warning to disappear• If EstimationDegraded error comes up switch to manual steering	End of track reached	<ul style="list-style-type: none">• Immediately switch to manual steering• Choose new guiding line
Distance to track large	<ul style="list-style-type: none">• Check if the autopilot system processes the commands by the track control system• Acknowledge warning	Turn too sharp	<ul style="list-style-type: none">• Switch to manual steering• Check guiding line for errors (points very close together)• Choose new guiding line
GPS (2): No position received	<ul style="list-style-type: none">• Acknowledge warning• Closely monitor track control system for correct operation• Increase attention• Wait if data comes back• otherwise switch to manual steering	Rudder change too large	<ul style="list-style-type: none">• Acknowledge alarm by switching to manual steering.• Wait until state of track control system returns to „READY“.• Check in ECDIS if ship position on map and reality match.• Switch on track control system• Increase attention
GPS (2): No velocity received	<ul style="list-style-type: none">• Acknowledge warning and closely monitor track control system for correct operation• Error persists after 10 minutes? ➡ Contact support, if nec. switch to manual steering	Position unusable	<ul style="list-style-type: none">• Acknowledge alarm by switching to manual steering. There is no other way to acknowledge the alarm.• Wait until state of track control system returns to „READY“.• Check in ECDIS if ship position on map and reality match.• Switch on track control system• Increase attention
GPS (2): No heading received	<ul style="list-style-type: none">• Acknowledge warning and closely monitor track control system for correct operation• Error persists after 10 minutes? ➡ Contact support, if nec. switch to manual steering	Dead man alarm	<ul style="list-style-type: none">• Acknowledge alarm by switching to manual steering.• Activate TrackPilot mode again
Velocity low	<ul style="list-style-type: none">• Increase velocity• Acknowledge warning	Target too close	<ul style="list-style-type: none">• Acknowledge alarm• Continue manually and increase distance to AIS target or deactivate TargetPilot
Dead man warning	<ul style="list-style-type: none">• Move Track or click any button on the touch display	Target lost	<ul style="list-style-type: none">• Acknowledge alarm by switching to manual steering. There is no other way to acknowledge the alarm.• Continue manually and select new AIS target or deactivate TargetPilot
Target close	<ul style="list-style-type: none">• Decrease velocity or deactivate TargetPilot or select different target	Collision ahead	<ul style="list-style-type: none">• Acknowledge alarm by switching to manual steering. There is no other way to acknowledge the alarm.• Continue to steer manually and avoid collision• In case of false alarm, check the setting of the argoLaneWarning
Target lost	<ul style="list-style-type: none">• Closely monitor track control system for correct operation	Autopilot connection lost	<ul style="list-style-type: none">• Switch off immediately• Check correct function of all devices• Contact customer support
AIS: No data received	<ul style="list-style-type: none">• TargetPilot active? ➡ Closely monitor track control system for correct operation• Malfunction of AIS? ➡ immediately deactivate TargetPilot	I/O: Error - Contact support	<ul style="list-style-type: none">• Switch off immediately• Check correct function of all devices• Contact customer support
Collision ahead	<ul style="list-style-type: none">• Move current track• Wait until the ship has reached the shifted line		
Power supply connected incorrectly	<ul style="list-style-type: none">• Contact dealer/installer		
TrackPilot switched off	<ul style="list-style-type: none">• Activate TrackPilot again if required• Check correct function of all devices		
End of SafetyContour ahead	<ul style="list-style-type: none">• Select new safety corridor		
PS/SB limit violated	<ul style="list-style-type: none">• Move the track to keep the planned path within the safety corridor		
No ROT received	<ul style="list-style-type: none">• Check the correct function of all devices.• If this warning does not disappear by itself, contact support.		
ECDIS / Alphanon Display: connection lost	<ul style="list-style-type: none">• (Re-)Start the ECDIS / Alphanon Display.• If this warning does not disappear by itself, contact support.		
AIS: Error - Contact support	<ul style="list-style-type: none">• (Re-)Start the AIS.• If the warning does not disappear by itself, contact support.		