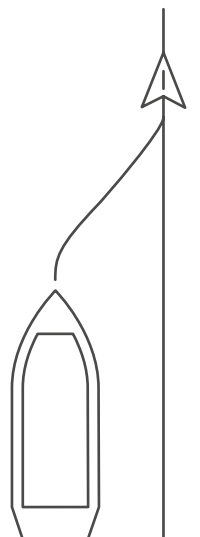
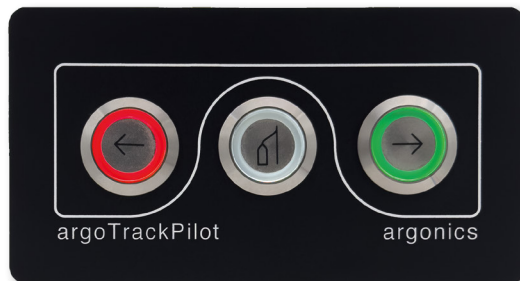


Product Description and Technical Data



argoTrackPilot

argoTrackPilot is the world's first automatic track-keeping system for inland vessels along pre-defined tracks.

argoTrackPilot represents the next logical step toward an autonomous vessel beyond autopilots (ROT controllers).

argoTrackPilot ensures that the vessel remains on the track during all weather and visibility conditions. The skipper is alleviated from tiring routine work during navigation. The skipper only takes action when necessary by choosing an appropriate offset to the track.

Features

- Automatic track-keeping along pre-defined tracks
- Consistently low track deviation, even when sailing at night or in fog
- Tracks adjustable by the skipper
- Easy adjustment of offset to track for passing and meeting of other vessels
- Interface to all commonly used autopilots
- Predictive navigation through guiding line analysis

Benefits and possible applications

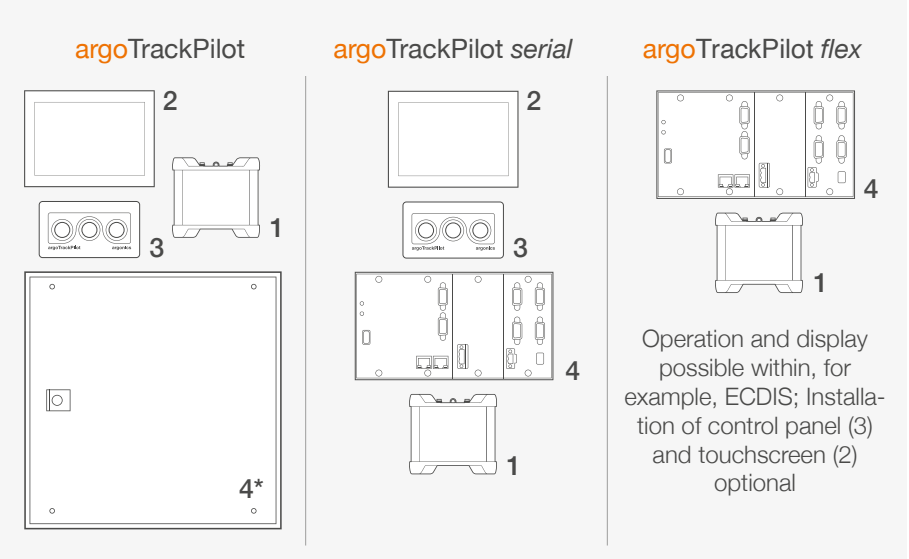
- Less rudder action through predictive navigation and through small corrections with continuous control
- Increased safety by alleviating the skipper from tiring routine work
- Focus on monitoring and maneuvering
- Optimized tracks possible depending on loading conditions and water levels for low fuel consumption

Prerequisites

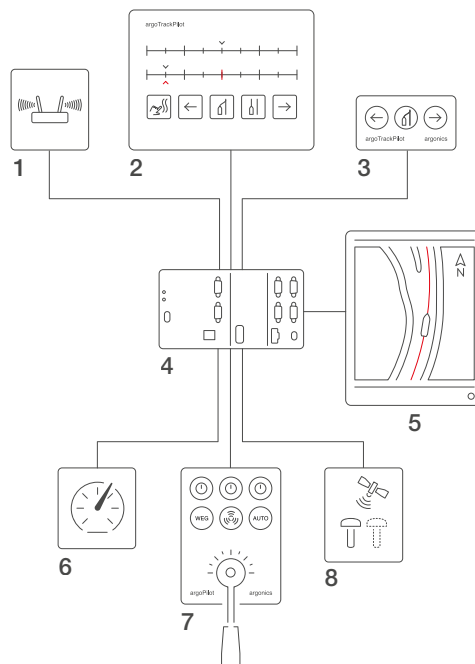
(Use of existing equipment)

- GNSS compass
- ROT indicator
- Autopilot
- Inland ECDIS

Variants and scope of delivery



Operation and display possible within, for example, ECDIS; Installation of control panel (3) and touchscreen (2) optional



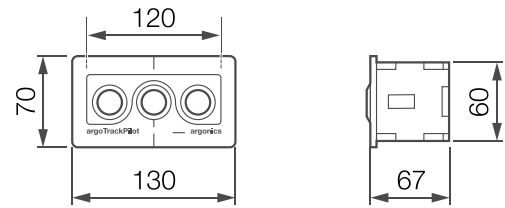
System overview

- 1 LTE modem for remote maintenance
- 2 Touchscreen 7" for monitoring and operation
- 3 Control panel argoTrackPilot for console installation
- 4 Control system argoTrackPilot MC206, certified by DNV, BV (*possibly in control cabinet)
- 5 ECDIS, e.g. argoRadarPilot
- 6 ROT indicator
- 7 Autopilot
- 8 GNSS compass

Technical Data

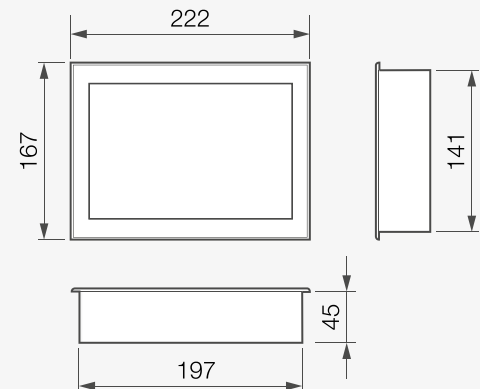
Control panel

IP rating	IP 65
Dimensions (front plate)	width: 130 mm, height: 70 mm
Dimensions (mounting)	width: 120 mm, height: 60 mm, depth: 67 mm
Weight	290 g
Ambient temperature	-25 °C ... 60 °C
Storage temperature	-40 °C ... 85 °C
Relative humidity	5% ... 95%



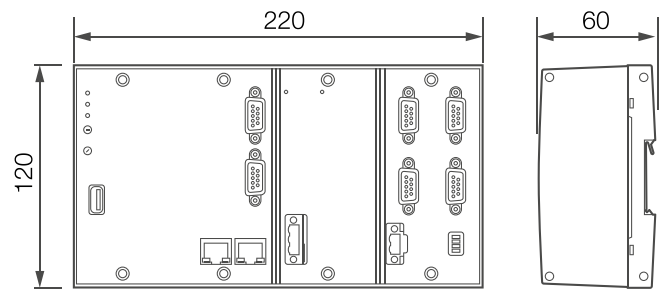
Touchscreen

Size	7"
Resolution	800 × 480
Power supply	24 V
Dimensions (front plate)	width: 222 mm, height: 167 mm,
Dimensions (mounting)	width: 197 mm, height: 141 mm, depth: 45 mm
Weight	850 g
Ambient temperature	0 °C ... 60 °C (without cooling)
Storage temperature	-20 °C ... 70 °C
Relative humidity	5% ... 95% without condensation



Control system / PLC

Supply voltage	18 VDC ... 32 VDC
Supply current	1,5 A
Dimensions	width: 220 mm, height: 120 mm, depth: 60 mm
Weight	1,4 kg
Ambient temperature	-25 °C ... 60 °C
Storage temperature	-40 °C ... 85 °C
Relative humidity	5% ... 95%
Incl. terminal block for power supply (not pictured)	

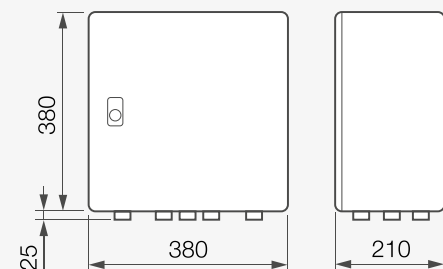


Interfaces

- 1 × RS232 (no galvanic isolation)
- 1 × RS232/RS422 (no galvanic isolation)
- 4 × RS232/RS422 (galvanic isolation)
- 2 × Ethernet

Control cabinet

IP rating	IP 66
Dimensions	width: 380 mm, height: 380 mm, depth: 210 mm
Weight	9,48 kg



Modem*

IP rating	IP 30
Supply voltage	9 VDC ... 30 VDC
Dimensions	width: 109,6 mm, height: 100 mm, depth: 50,1 mm
Weight	280 g
Ambient temperature	-40 °C ... 75 °C
Relative humidity	10% ... 90%
Conformity	ES-TRIN 10.20

*Incl. antennas (not displayed)

