



Note on funding opportunities

The Federal Ministry for Digital and Transport Affairs currently runs a funding programme for the sustainable modernisation of inland waterway vessels. This funding programme has been extended until **31 December 2026**.

You can find more information on the funding programme and the application form at elwis.de in the 'Service' section under 'Funding programmes' or on our website.



Information on current funding measures



More information about argoPositionPilot



Contact

argonics GmbH
Heßbrühlstraße 21D
70565 Stuttgart
Germany



info@argonics.de



+49 711 / 25253720

argonics GmbH

argoPositionPilot

One Hand, Total Control

Manoeuvring aid for support in front of locks, in the harbour and when mooring

argonics GmbH

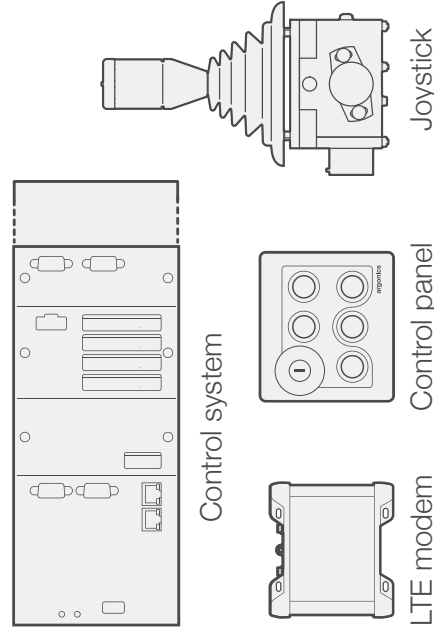


argoPositionPilot is a maneuvering aid for inland waterway vessels. The system enables intuitive control of the ship, making it easier to maneuver in front of locks, in the harbour and when mooring or casting off.

Features

- Operation via joystick and control panel
- Individual connection of azimuth drives from manufacturers Schottel, Veth, Verhaar Omega, Voith-Schneider and many more possible
- Connection of several external control stations possible

Scope of delivery

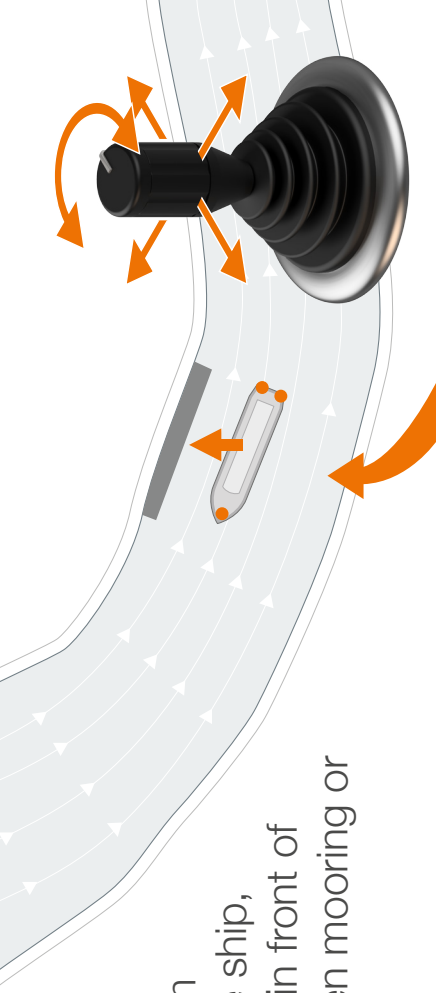
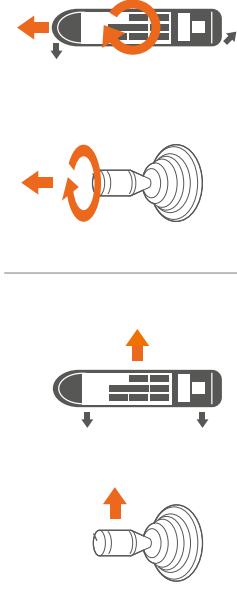


argoPositionPilot is currently only available for ships with azimuth drives.

How it works

argoPositionPilot regulates the longitudinal, transverse, and rate-of-turn speed of the vessel according to the skipper's input using the joystick. Speed and rotation are controlled by the system.

This means that the ship can be controlled with just one joystick instead of several levers.



Simplifies complex manoeuvres, e.g. when mooring and casting off, during lock passages and in the harbour

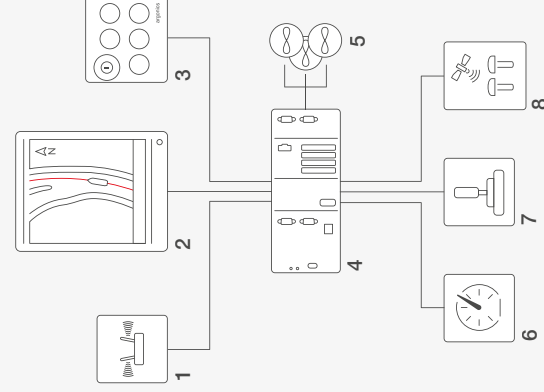
Benefits

- Safe operation thanks to intuitive joystick control during complex manoeuvres
- Only **one** joystick to control the speed and direction of the ship
- Display and operation with **argoControlPanel flex** possible on all PCs
- Perfect integration of **argoTrackPilot**

Prerequisites

- GNSS compass and ROT indicator
- ECDIS chart display
- Azimuth drives with compatible interface

System overview



- 1 LTE modem
- 2 ECDIS, e.g. **argoRadarPilot** with **argoControlPanel flex**
- 3 Control panel **argoPositionPilot**
- 4 Control system **argoPositionPilot** MC206, certified by DNV, BV
- 5 Connection of azimuth drives
- 6 ROT indicator
- 7 Joystick
- 8 GNSS compass