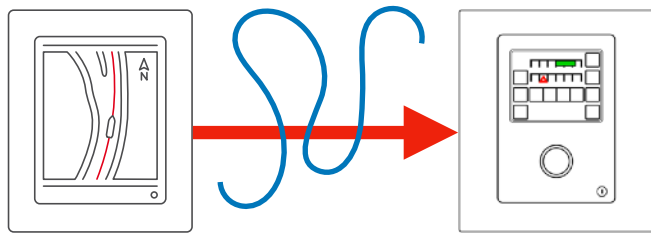


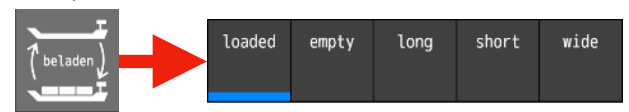
AlphaRiverTrackPilot – quick start guide

Preparation

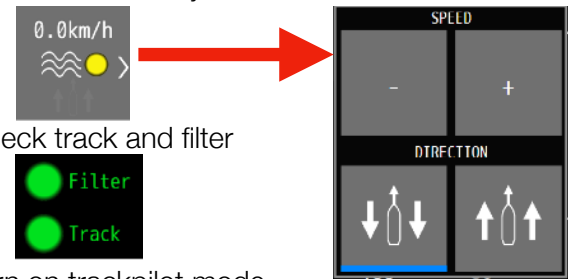
1. Choose track from ECDIS or in TrackPilot



2. Choose profile



3. Set stream velocity and direction



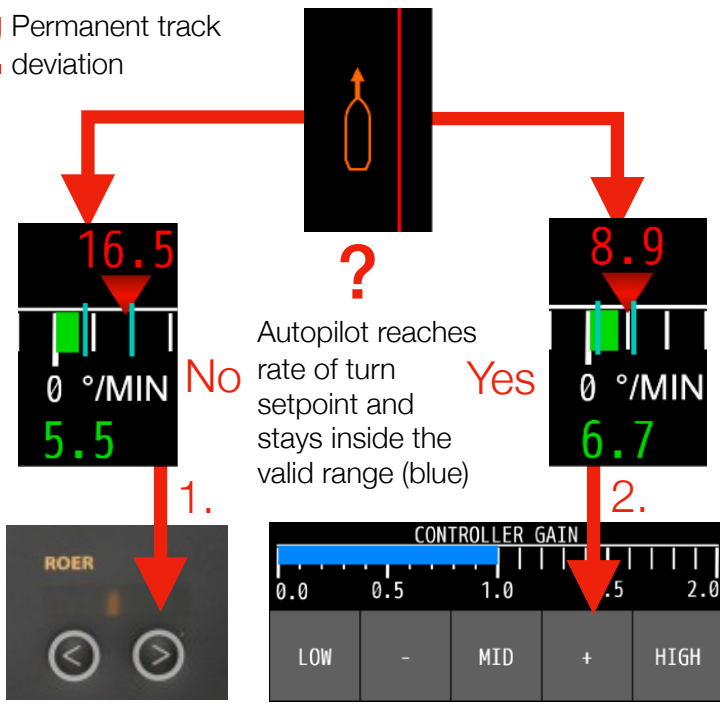
4. Check track and filter



5. Turn on trackpilot mode

Permanent track deviation ! Check stream settings

! Permanent track deviation

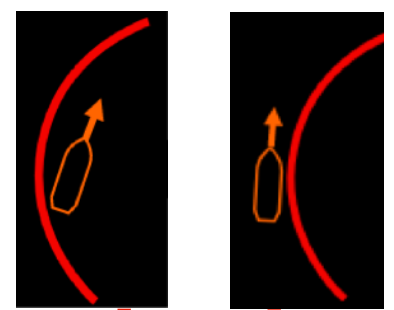


1. Increase „rudder“ on autopilot
2. Increase „controller gain“ on TrackPilot
3. Check rate of turn signal

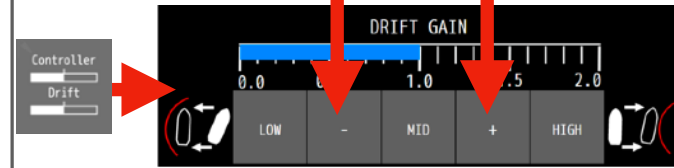
Deviation in curves

! Check stream settings

Too far on inside of curve Too far on outside of curve



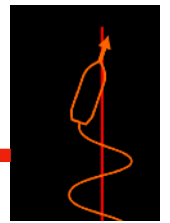
Adjust drift gain



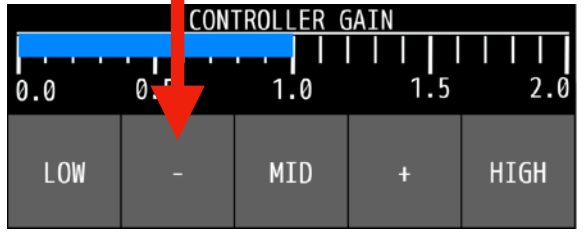
Test for a few minutes and adjust further if necessary

Oscillations ! Check stream settings

! Oscillations around guiding line



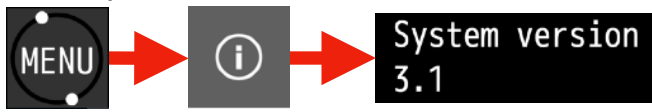
Lower „controller gain“



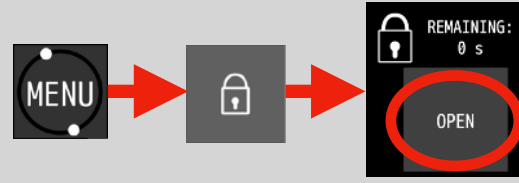
Test for a few minutes and adjust further if necessary

Miscellaneous

Check system version



Open access for remote support

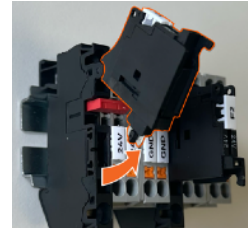


Restart TrackPilot

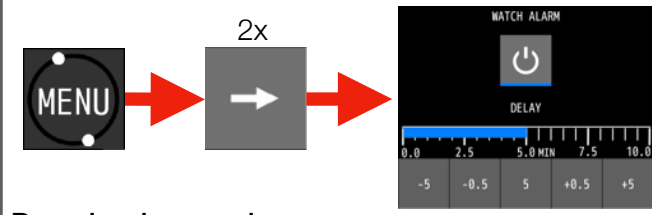
Variant A)



Variant B)



Setup watch alarm



Download manual



AlphaRiverTrackPilot – warnings and alarms

Warning Name	Action	Alarm Name	Action
AIS: Error - Contact support	<ul style="list-style-type: none"> • (Re-)Start the AIS. • If the warning does not disappear by itself, contact support. 	Autopilot connection lost: Take control	<ul style="list-style-type: none"> • Switch off immediately • Check correct function of all devices • Contact customer support
AIS: No data received	<ul style="list-style-type: none"> • TargetPilot active? ➡ Closely monitor track control system for correct operation • Malfunction of AIS? ➡ immediately deactivate TargetPilot 	Collision ahead: Take control	<ul style="list-style-type: none"> • Acknowledge alarm by switching to manual steering. There is no other way to acknowledge the alarm. • Continue to steer manually and avoid collision • In case of false alarm, check the setting of the argoLaneWarning
Close to end of track	<ul style="list-style-type: none"> • Switch to manual steering • Choose new guiding line 		
Collision ahead	<ul style="list-style-type: none"> • Move current track • Wait until the ship has reached the shifted line 	End of track reached: Take control	<ul style="list-style-type: none"> • Immediately switch to manual steering • Choose new guiding line
Distance to track large	<ul style="list-style-type: none"> • Check if the autopilot system processes the commands by the track control system • Acknowledge warning 	I/O: Error - Contact support	<ul style="list-style-type: none"> • Switch off immediately • Check correct function of all devices • Contact customer support
ECDIS / Alphanon Display: connection lost	<ul style="list-style-type: none"> • (Re-)Start the ECDIS / Alphanon Display. • If this warning does not disappear by itself, contact support. 	Lock warning: Take control	<ul style="list-style-type: none"> • Acknowledge alarm. Can only be done by deactivating the Trackpilot. • Continue manually.
End of SafetyContour ahead	<ul style="list-style-type: none"> • Select new safety corridor 	Position unusable: Take control	<ul style="list-style-type: none"> • Acknowledge alarm by switching to manual steering. There is no other way to acknowledge the alarm. • Wait until state of track control system returns to „READY“. • Check in ECDIS if ship position on map and reality match. • Switch on track control system • Increase attention
GPS (2): No heading received	<ul style="list-style-type: none"> • Acknowledge warning and closely monitor track control system for correct operation • Error persists after 10 minutes? ➡ Contact support, if nec. switch to manual steering 		
GPS (2): No position received	<ul style="list-style-type: none"> • Acknowledge warning • Closely monitor track control system for correct operation • Increase attention • Wait if data comes back • otherwise switch to manual steering 	Rudder change too large: Take control	<ul style="list-style-type: none"> • Acknowledge alarm by switching to manual steering. • Wait until state of track control system returns to „READY“. • Check in ECDIS if ship position on map and reality match. • Switch on track control system • Increase attention
GPS (2): No velocity received	<ul style="list-style-type: none"> • Acknowledge warning and closely monitor track control system for correct operation • Error persists after 10 minutes? ➡ Contact support, if nec. switch to manual steering 	System Error 001/002/003 - Contact support	<ul style="list-style-type: none"> • Switch off immediately • Contact customer support
Left/Right limit violated	<ul style="list-style-type: none"> • Move the track to keep the planned path within the safety corridor 		
Lock warning	<ul style="list-style-type: none"> • Pay close attention. • Adjust speed if necessary. 	Target lost: Take control	<ul style="list-style-type: none"> • Acknowledge alarm by switching to manual steering. There is no other way to acknowledge the alarm. • Continue manually and select new AIS target or deactivate TargetPilot
Lock warning not available	<ul style="list-style-type: none"> • Contact customer service. 	Target too close: Take control	<ul style="list-style-type: none"> • Acknowledge alarm • Continue manually and increase distance to AIS target or deactivate TargetPilot
No ROT received	<ul style="list-style-type: none"> • Check the correct function of all devices. • If this warning does not disappear by itself, contact support. 		
Position inaccurate	<ul style="list-style-type: none"> • Wait for the warning to disappear • If EstimationDegraded error comes up switch to manual steering 	Track too far away	<ul style="list-style-type: none"> • Switch to manual steering • Check if the correct guiding line has been chosen • Choose another line closer to the current position
Power supply connected incorrectly	<ul style="list-style-type: none"> • Contact dealer/installer 	Turn too sharp: Take control	<ul style="list-style-type: none"> • Switch to manual steering • Check guiding line for errors (points very close together) • Choose new guiding line
Strong cross current detected	<ul style="list-style-type: none"> • Increase attention 	Watch alarm: Take control	<ul style="list-style-type: none"> • Acknowledge alarm by switching to manual steering. • Activate Trackpilot mode again
Target close	<ul style="list-style-type: none"> • Decrease velocity or deactivate TargetPilot or select different target 		
Target lost	<ul style="list-style-type: none"> • Closely monitor track control system for correct operation 		
Trackpilot switched off	<ul style="list-style-type: none"> • Activate Trackpilot again if required • Check correct function of all devices 		
Velocity low	<ul style="list-style-type: none"> • Increase velocity • Acknowledge warning 		
Watch alarm: Activity required	<ul style="list-style-type: none"> • Move Track or click any button on the touch display 		